

Rainier Beach: A Beautiful Safe Place for Youth 2016 Year in Review Data Report

January 2017

Guide to this report

This report describes crime incidents in the ABSPY intervention area during 2016 and compares last year to the previous four in several ways. It is divided into 5 sections: one for each hot spot (Rose Street, Rainier & Henderson, Light Rail, Lake Washington, Our Safe Way). Each section contains the following data:

1. Graphs of broad crime incidents at the hot spot for each year from 2012 through 2016, by age group
2. Graphs of selected specific offenses at the hot spot for each year from 2012 through 2016, by age group (**please note:** assaults include both simple and aggravated assaults combined)
3. Narrative summary of data
4. Time of day, day of week, month of year information: while information on all three elements of time (time of day, day of week, month of year) that we track are included for each of the spots, graphs were only included if there was a pattern to be observed.

Broad crime incidents and specific offenses graphs are also included for all five hot spots combined.

Definitions:

Incidents	Situations in which the police attended and took a crime report. Multiple offenses may be involved in a single incident. We prioritize violent offenses in this analysis. See the example below for information about how this affects the numbers.
Offenses	Specific crimes that comprise an incident. A single incident may involve multiple offenses. See the example below.
Person Incidents	Crimes involving a person as a victim, e.g. robbery, assault, aggravated assault.
Property Incidents	Crimes involving loss of or damage to someone's property, e.g. theft, burglary, property damage, arson.

Disorder Incidents	Crimes that affect public order and quality of life, e.g. disturbances, liquor violations, drugs, threatening behavior, weapons, prostitution.
Other Incidents	Crimes that do not fit into person, property, or disorder categories, such as fraud and trespassing.

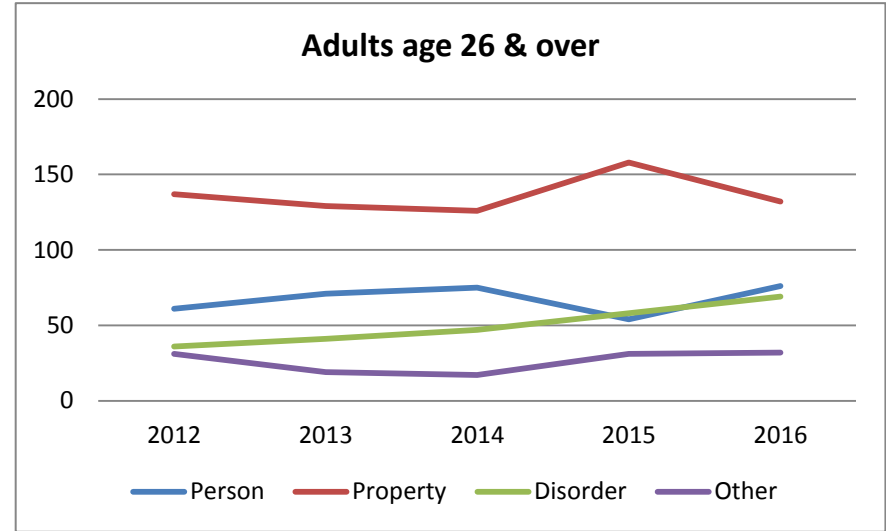
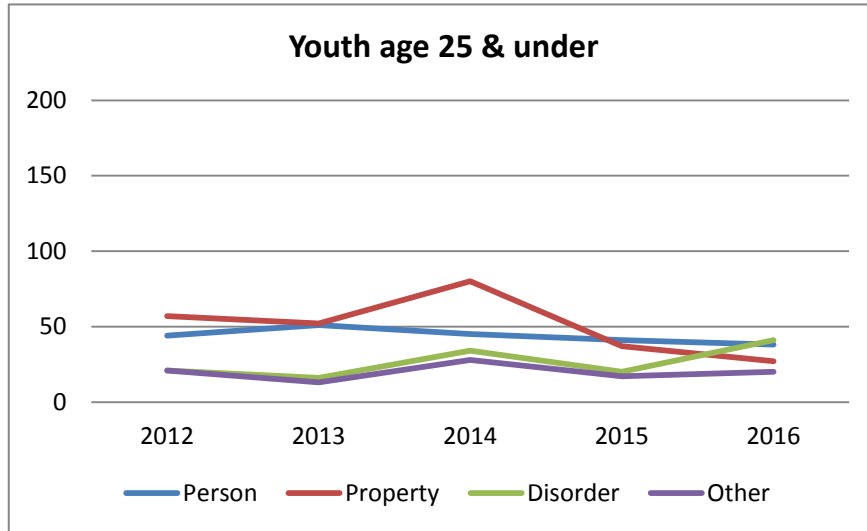
Incident/offense example: If an incident contains multiple offenses we prioritize the most serious violent offense when deciding which crime to use to classify the incident, followed by property offenses. For example, a youth is arrested on the street for robbery. During a search the police find drugs and a gun. The police report (incident) will contain three offenses: robbery, drugs, and weapons. We would classify the **incident** as robbery because it is a violent offense. However, in the **offenses** graph this incident would be counted three times: one robbery offense, one drug possession offense, and one weapons offense.

Caveats

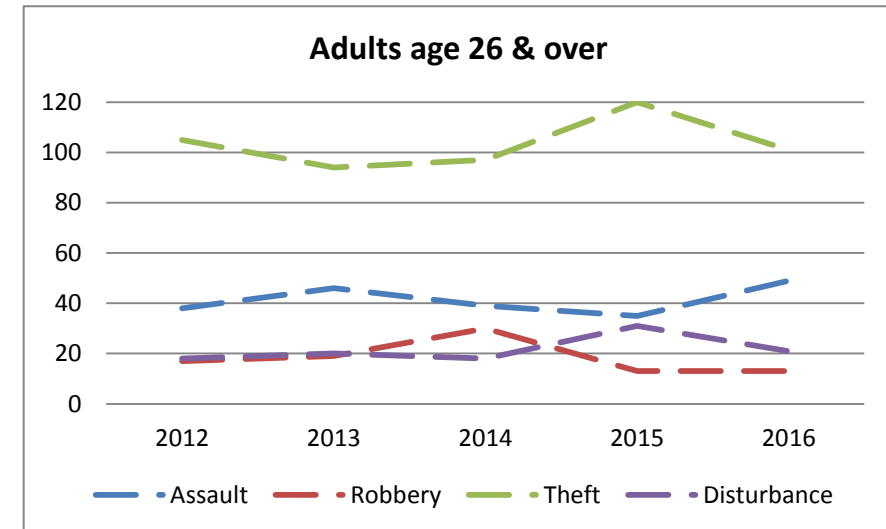
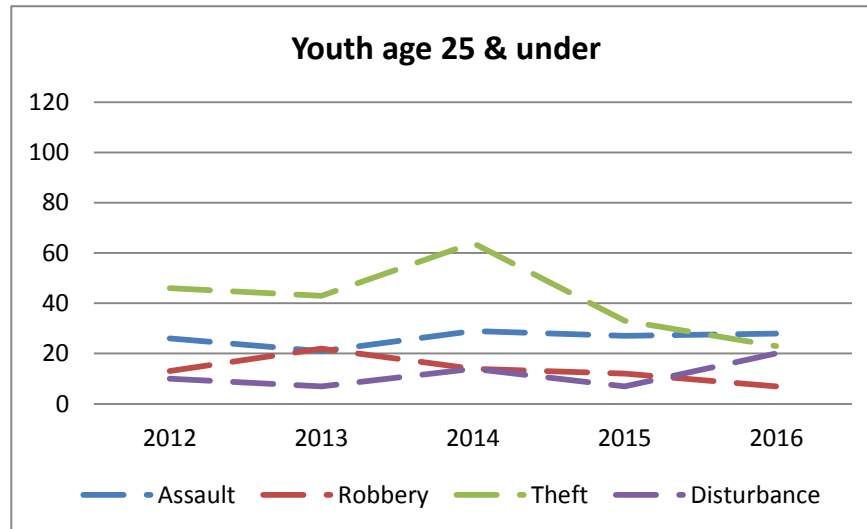
- Seattle Police Department uses different rules to count and prioritize offenses. We do not have access to this information, so our method may differ and may not match official UCR counts for the city.
- These numbers cannot be used to determine whether an intervention is “working.” We will provide more detailed analysis later in the project.
- Crime trends can change rapidly from month to month, especially in small areas.

Acknowledgements: Zoe Vitter; Seattle Police Department

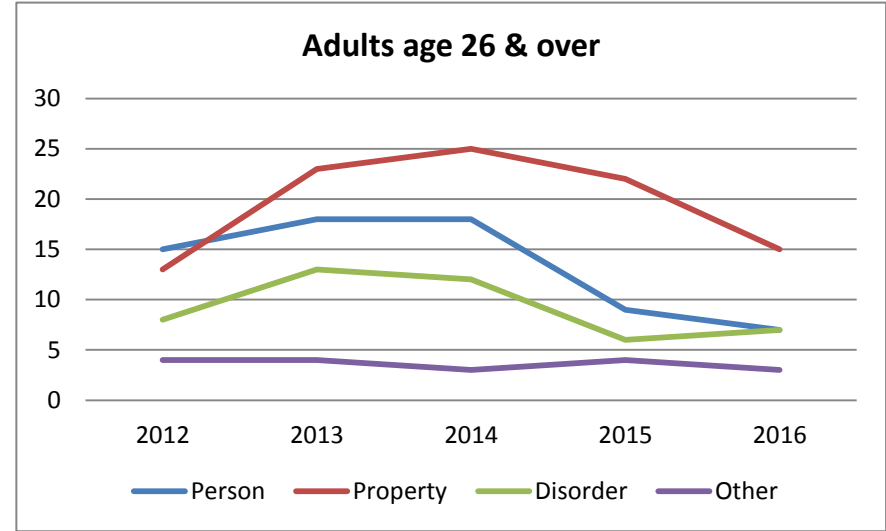
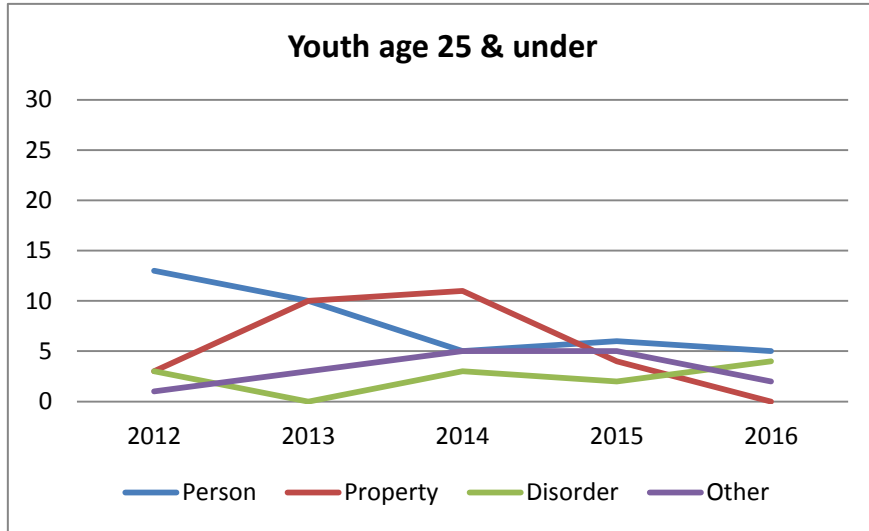
Rainier Beach Hot Spots Total Broad Incidents by Age Group, Number
All Reports: 2012 through 2016



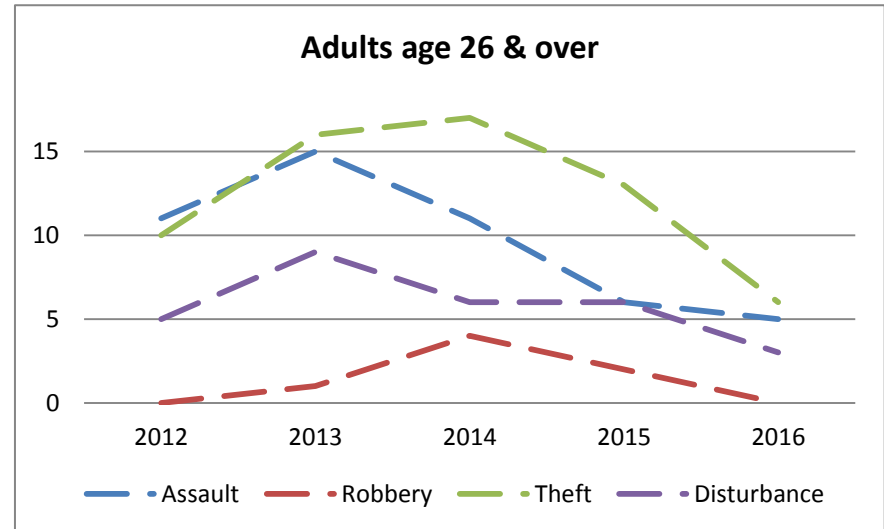
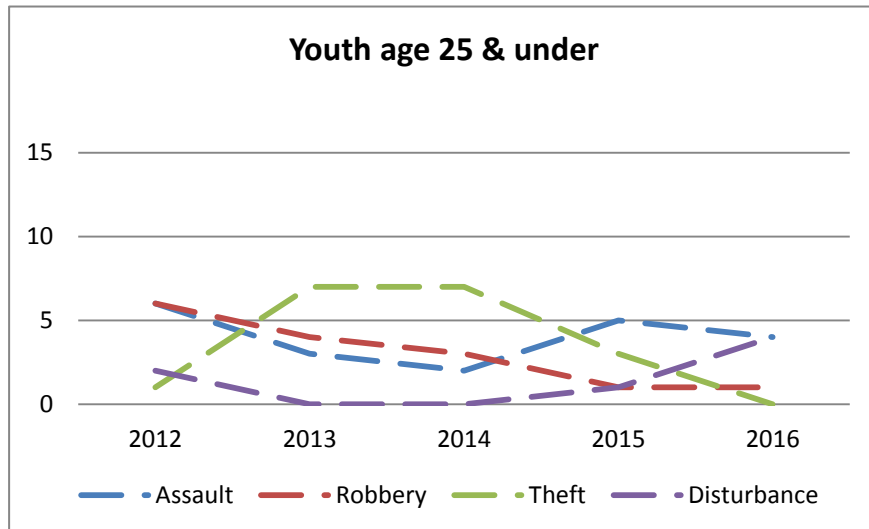
Rainier Beach Hot Spots Total Specific Selected Offenses by Age Group, Number
All Reports: 2012 through 2016



Rose Street Broad Incidents by Age Group, Number
All Reports: 2012 through 2016



Rose Street Specific Selected Offenses by Age Group, Number
All Reports: 2012 through 2016



Rose Street

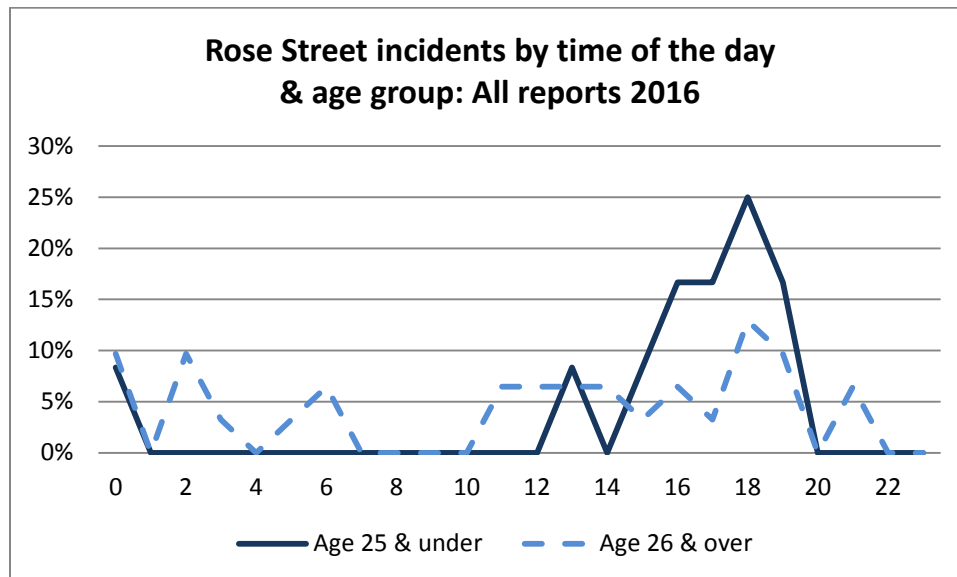
Broad incidents

- The total number of youth and adult incidents decreased for the last two years.
- The most significant declines were for crimes against people involving adults and property crimes involving youth and adults.
- Incidents of disorder involving youth increased very slightly in 2016.

Selected offenses

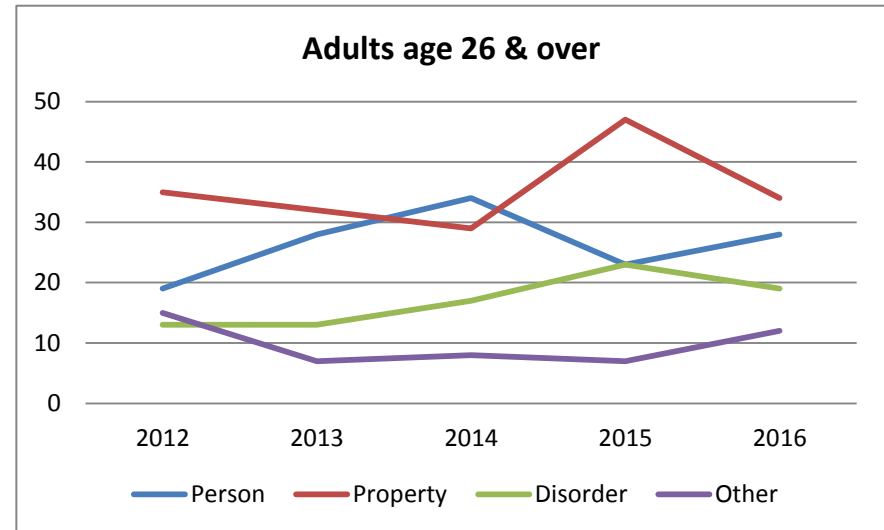
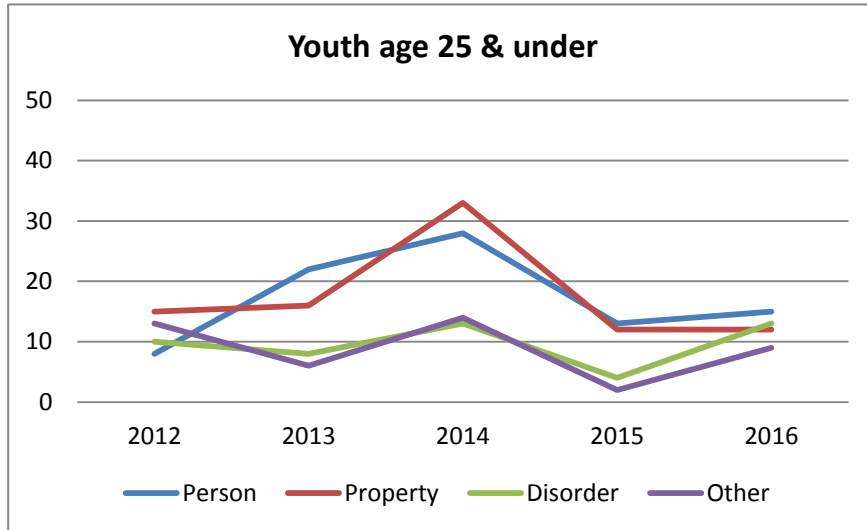
- Assaults (both simple and aggravated combined) among youth have remained stable from 2015 to 2016. Those reported among adults have been decreasing since 2013.
- The number of robberies has remained very low and stable over the last year.
- Thefts have been decreasing, in both age groups, since 2014 and are about equal to the number of them in 2012.

Time of day, day of week, month of year

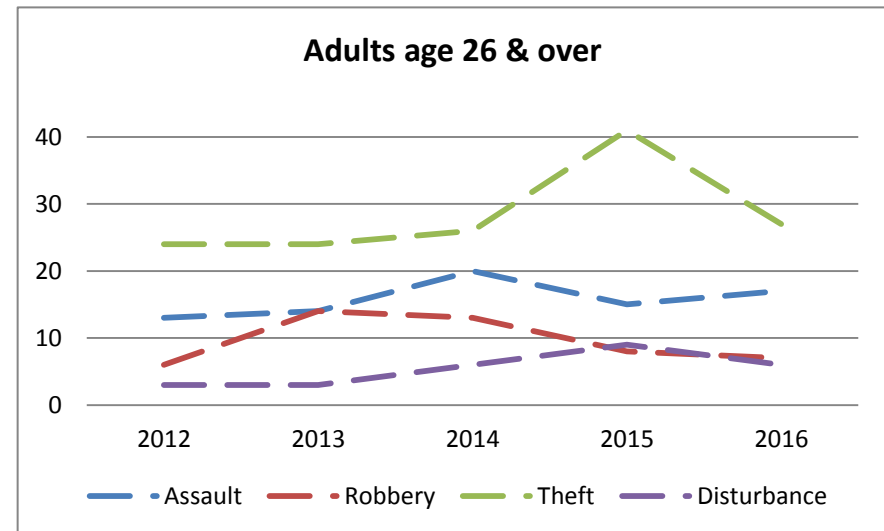
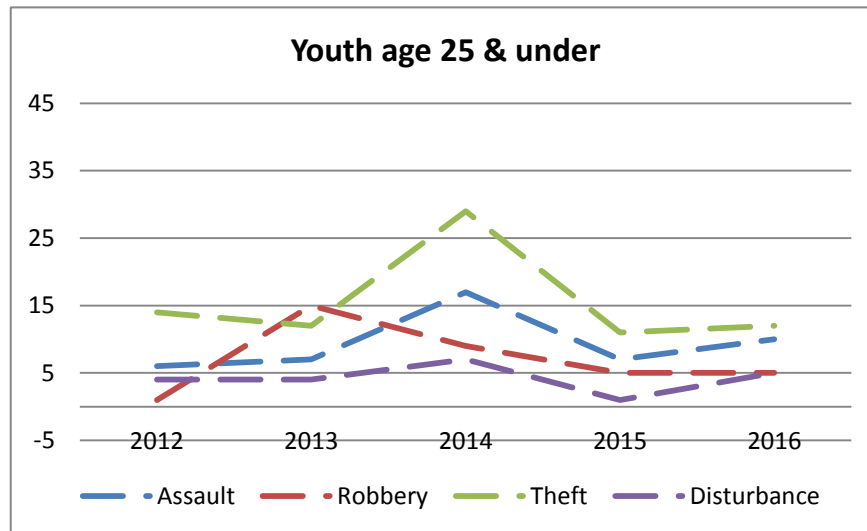


- Most youth incidents occurred between 4 and 8pm; adult incidents were more evenly spread throughout the day.
- Youth incidents were evenly spread throughout the week; overall, there were fewer incidents on Saturday than any other day of the week.
- Incidents were fairly evenly spread throughout the year, although June and July collectively had the most youth incidents.

Rainier & Henderson Broad Incidents by Age Group, Number
All Reports: 2012 through 2016



Rainier & Henderson Specific Selected Offenses by Age Group, Number
All Reports: 2012 through 2016



Rainier & Henderson

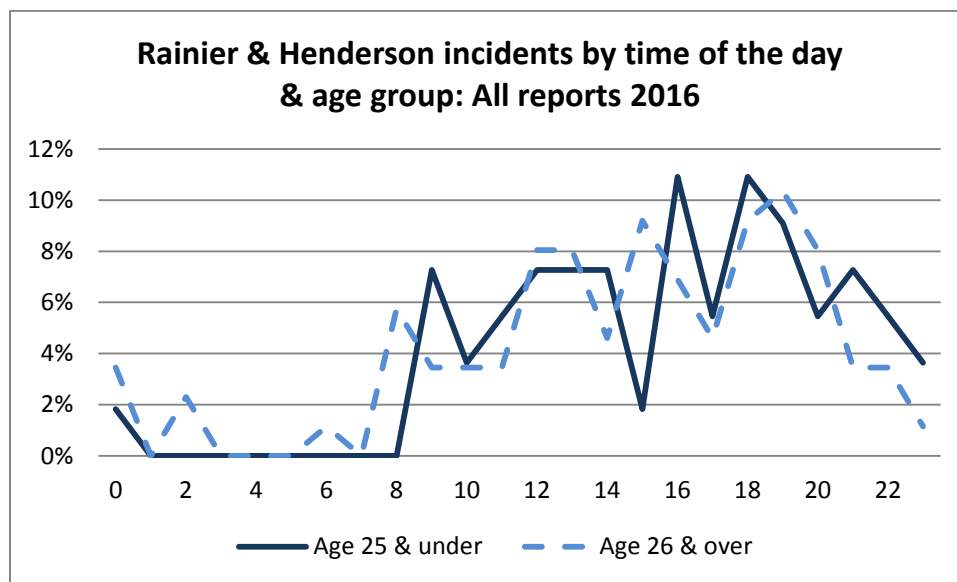
Broad incidents

- There was a slight uptick in the number of crimes against persons in 2016, but the number for both age groups remain lower than 2014.
- Property crimes have remained stable among youth, and decreased among adults.
- Incidents of disorder and other incidents have increased in 2016.

Selected offenses

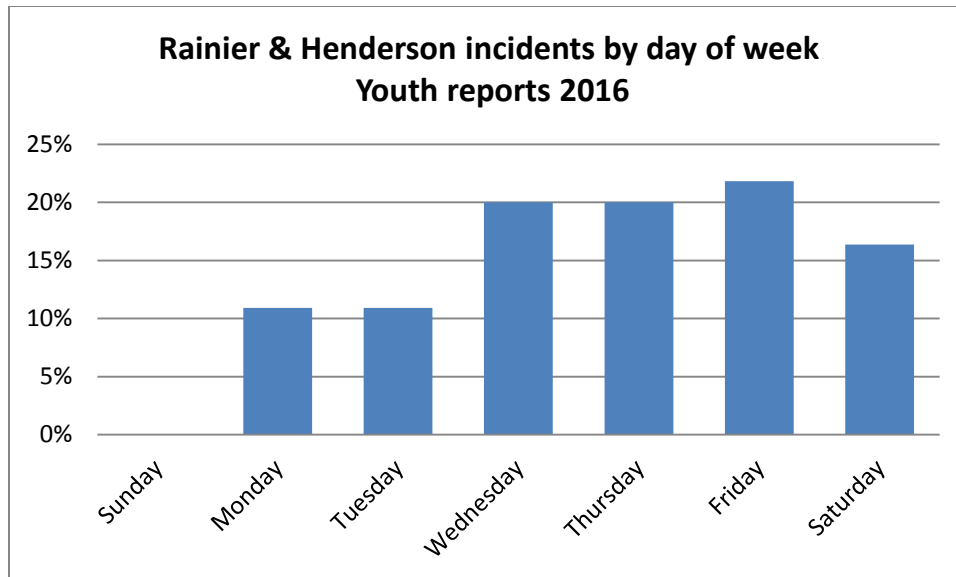
- The number of assaults (both simple and aggravated combined) overall has increased slightly between 2015 and 2016. There are still more assaults last year than there were in 2012 and 2013, but fewer than 2014.
- The number of robberies has remained stable between 2015 and 2016.
- Theft has remained stable among youth, but incidents involving adults decreased significantly in the last year.

Time of day, day of week, month of year

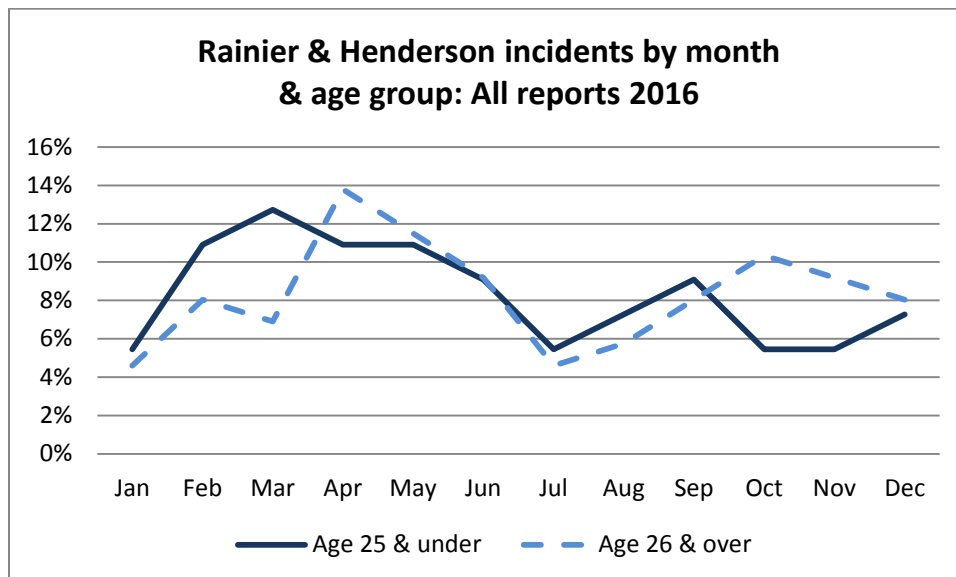


- Youth and adult patterns are very similar. For the most part, incidents begin about 9am, peak around 4 and 6pm and then decline until midnight.
- Youth incidents follow roughly the same pattern during the school year, but are later in the day in the summer months (between 3 and 9pm¹).

¹ Note however that only 7 youth incidents were reported during this time.



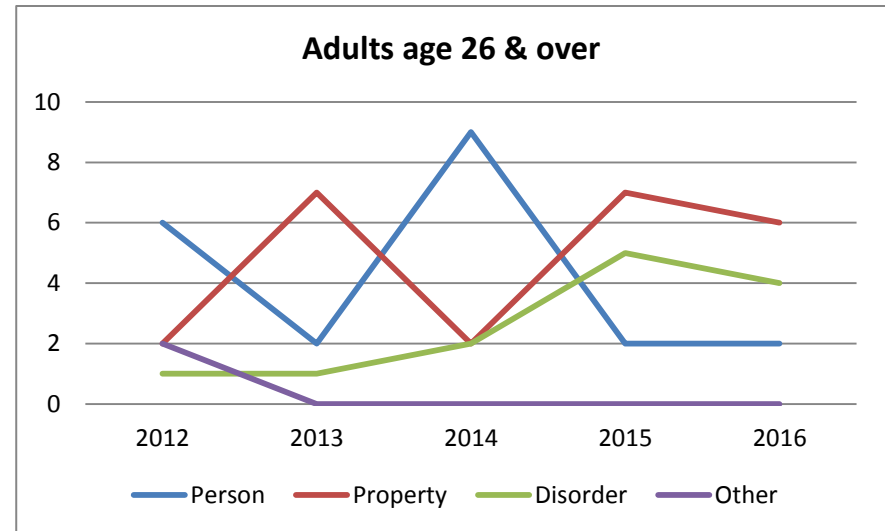
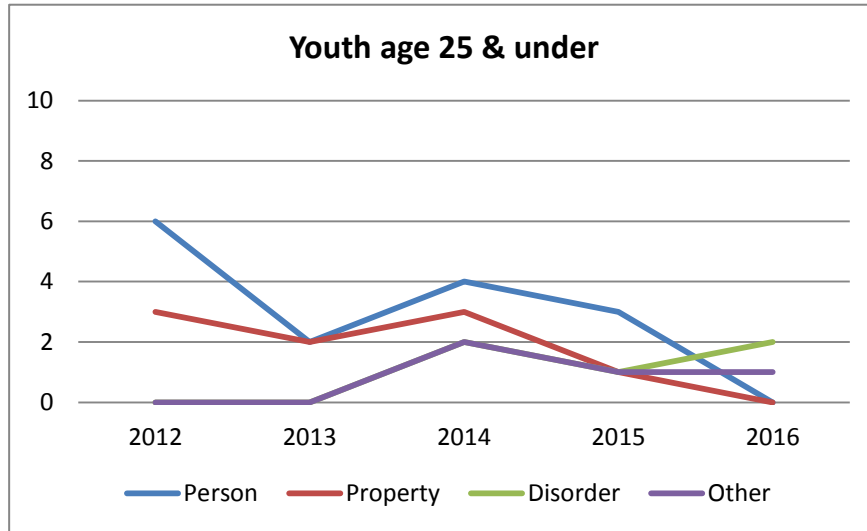
- The number of youth incidents reported in 2016 builds through the week, with none reported Sundays, and the greatest number reported on Fridays. During the summer months of July and August, the greatest number of incidents was reported on Saturdays².
- Incidents among adults were distributed fairly evenly throughout the week, with the exception of Sundays in 2016, which had the fewest number of adult incidents.



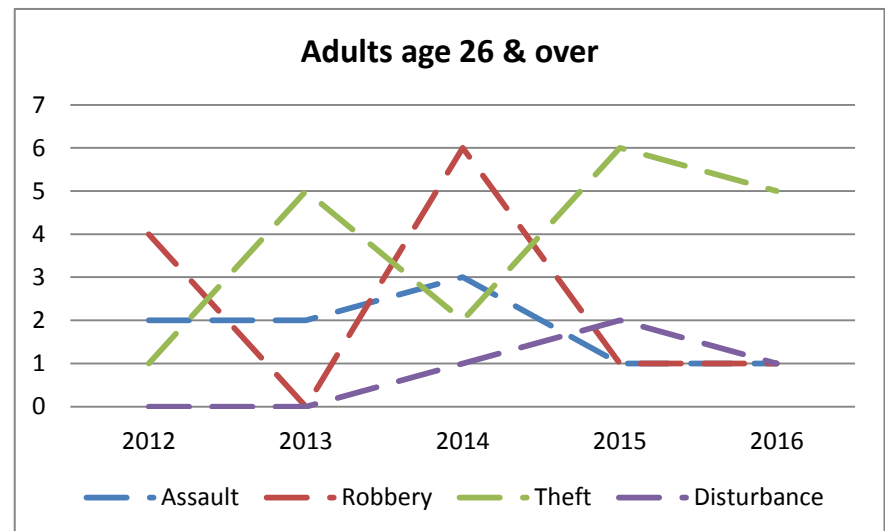
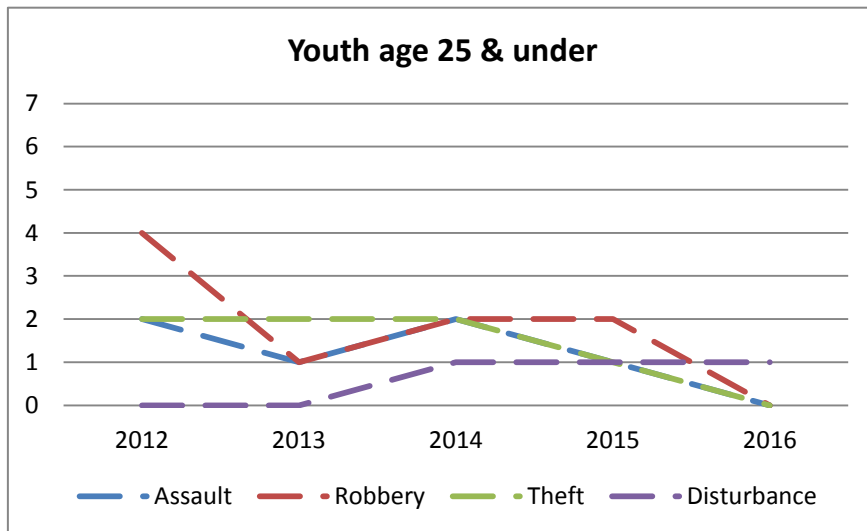
- Most youth incidents in 2016 occurred between February and June, particularly compared with adult incidents during the same time. Nearly two-thirds of youth incidents occurred by July, compared to half of adult incidents during the same time period.
- January and July had the lowest overall incidents among both age groups, although October and November were also low incident months for youth incidents in 2016.

² Note however that only 7 youth incidents were reported during this time.

Light Rail Broad Incidents by Age Group, Number
All Reports: 2012 through 2016



Light Rail Specific Selected Offenses by Age Group, Number
All Reports: 2012 through 2016



Light Rail

Broad incidents

- The overall number of incidents among youth remains low and is fairly stable since 2012, although there were no incidents involving youth recorded in 2016.
- Property crimes were most frequently occurring in 2015, followed by disorder.

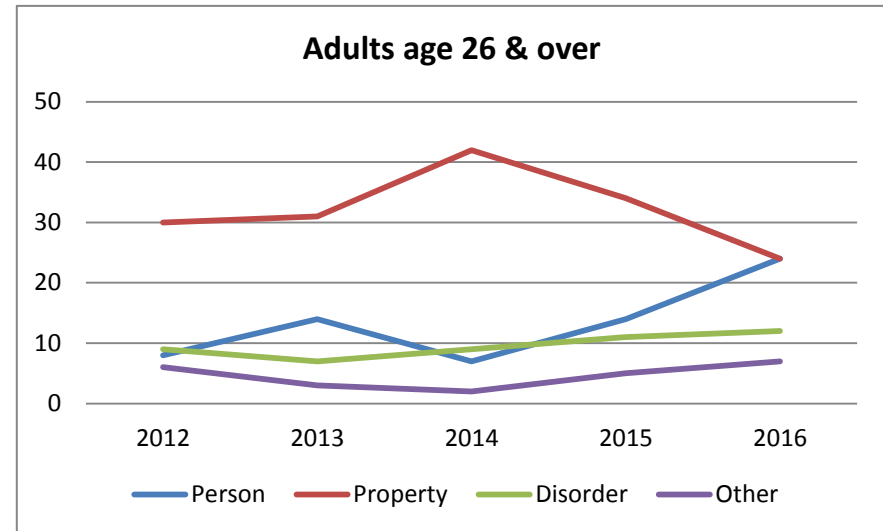
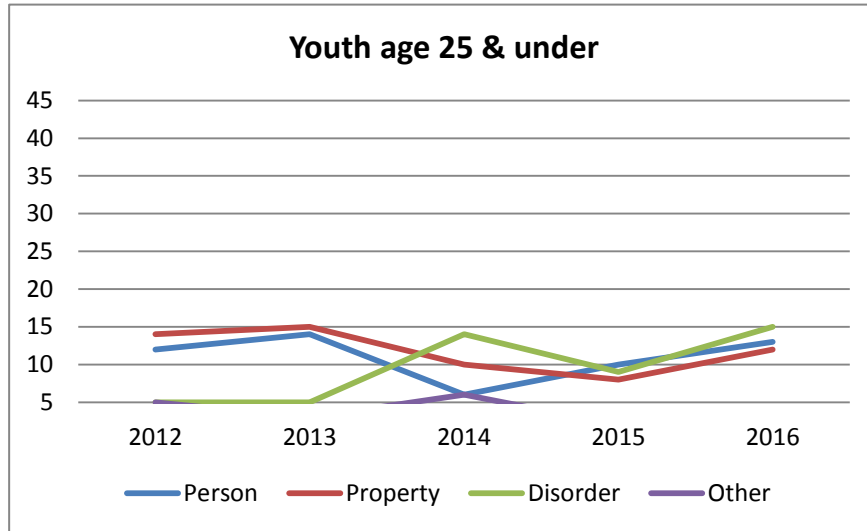
Specific offenses

- There are fewer (or no) assaults (simple and aggravated combined) and robberies reported in 2016.
- The number of thefts decreased slightly between 2015 and 2016.

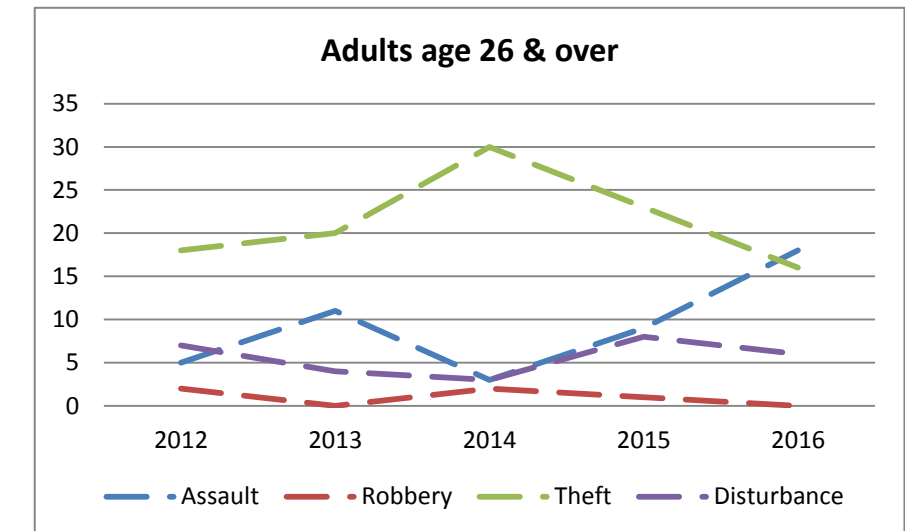
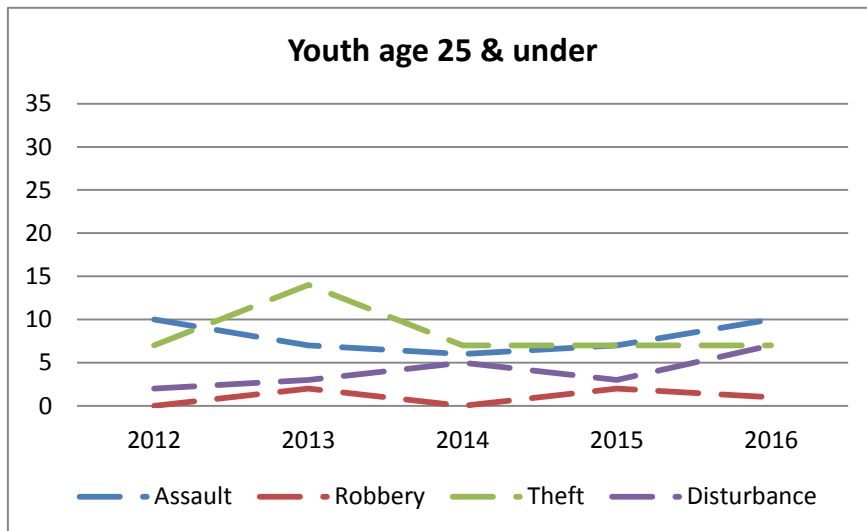
Time of day, day of week, month of year

- More incidents occurred during morning and evening rush hours at this location than at other times of the day.
- 2016 Incidents at this location were fairly evenly distributed throughout the day of week and month of year.

Lake Washington Broad Incidents by Age Group, Number
All Reports: 2012 through 2016



Lake Washington Specific Selected Offenses by Age Group, Number
All Reports: 2012 through 2016



Lake Washington

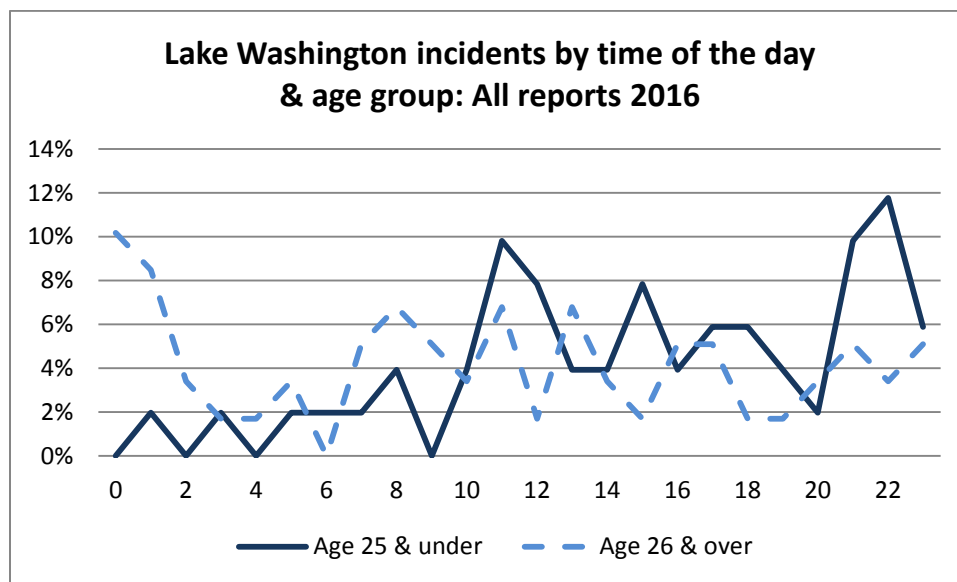
Broad incidents

- The total number of incidents increased in 2016 compared to 2015, particularly among youth.
- Small increases were seen in youth incidents involving people and property. Larger increases were seen among incidents of disorder.
- There were also increases in adult incidents involving people, but decreases in property incidents involving adults.

Specific offenses

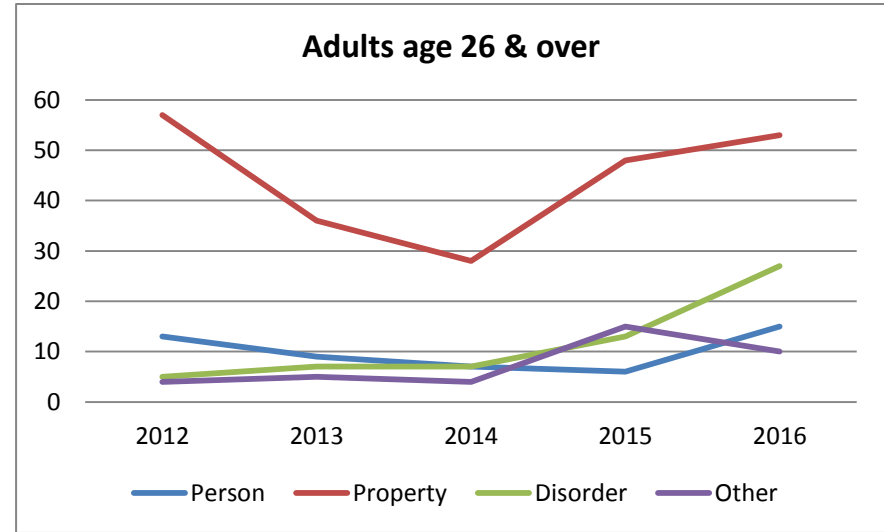
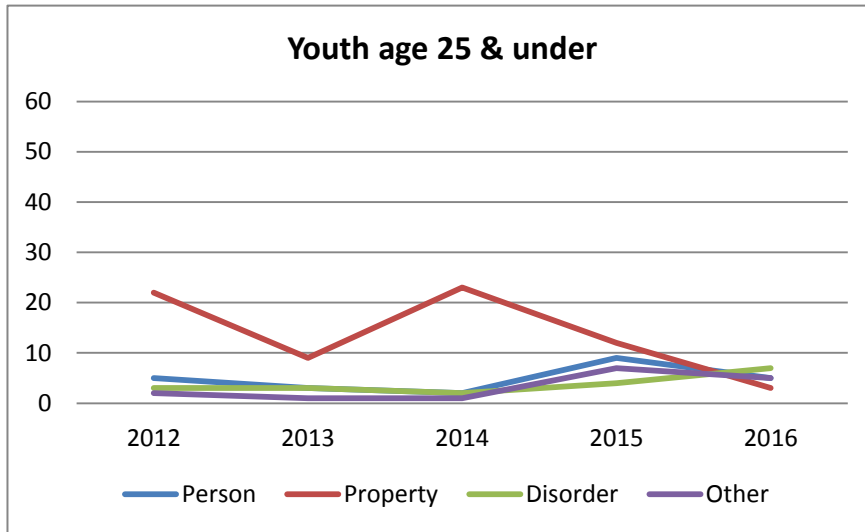
- The number of assaults (both simple and aggravated combined) have increased between 2015 and 2016. The number of robberies has stayed low and stable.
- The number of thefts involving adults have decreased since 2013, but youth involved thefts were stable between 2014 and 2016.
- Youth disturbances have increased between 2015 and 2016.

Time of day, day of week, month of year

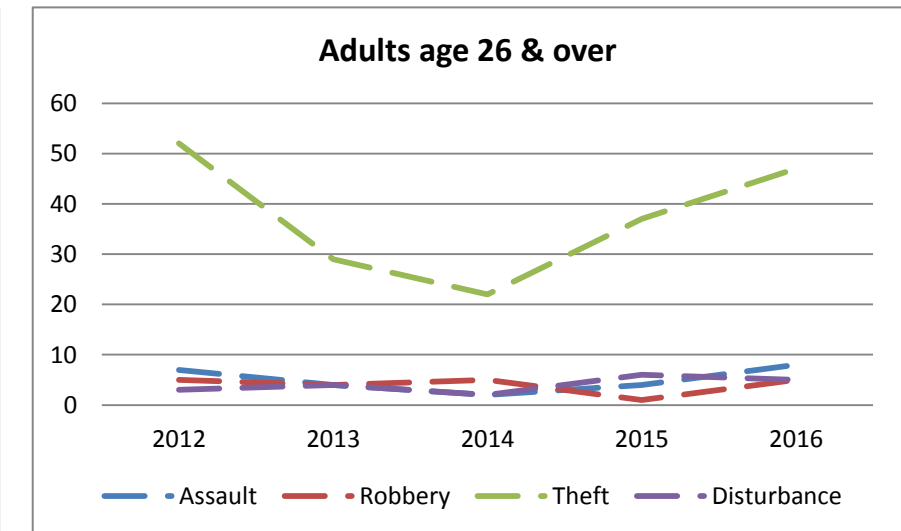
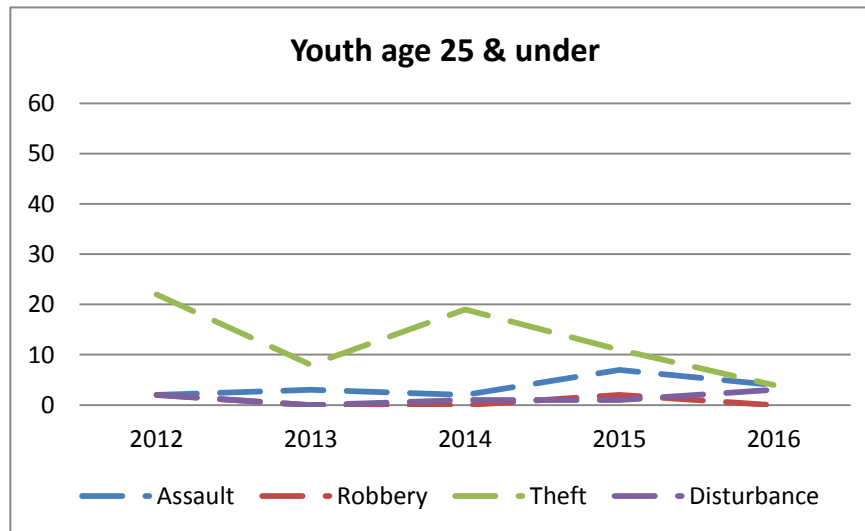


- Youth incidents spike at 11am and 10pm, and vary between those times. Adult incidents during this time were more evening distributed, but do spike at midnight.
- Incidents were distributed fairly evenly throughout the week, with the exception of Sundays, which was the day of week that had the fewest number of incidents in 2016. Few incidents were recorded among youth on Saturdays that year, but the greatest number of adult incidents was recorded.
- Overall, incidents were fairly evenly distributed throughout the year, the greatest number of incidents were recorded in August and September of 2016, and the fewest in December.

Our Safe Way Broad Incidents by Age Group, Number
All Reports: 2012 through 2016



Our Safe Way Specific Selected Offenses by Age Group, Number
All Reports: 2012 through 2016



Our Safe Way

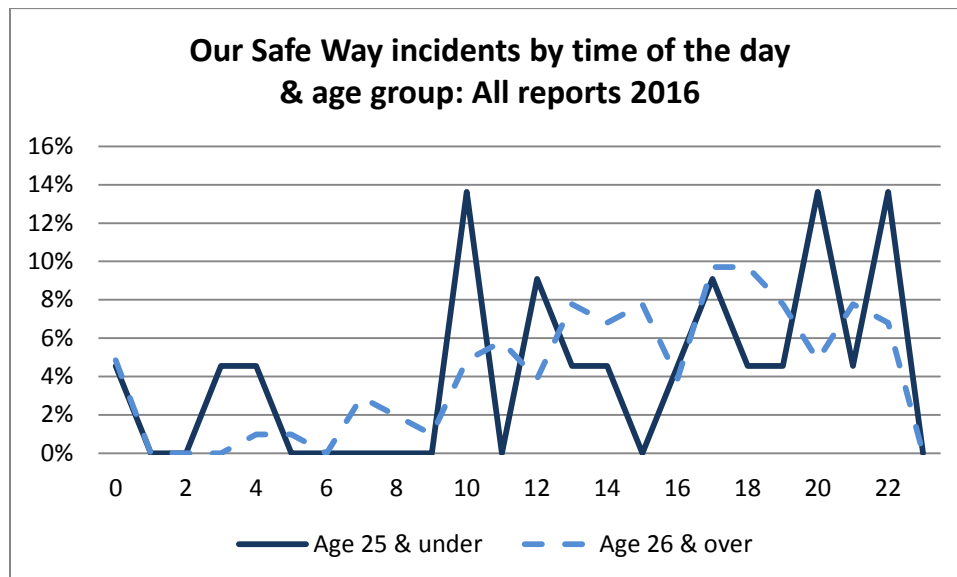
Broad incidents

- The total number of incidents have decreased among youth from 2015 to 2016, but increased among adults. Increases seen over the last year were not as great as those seen the year before.
- The number of youth involved person and property incidents has decreased from 2015 to 2016.
- Adult incidents involving people and disorder have more than doubled between 2015 and 2016, while the number of property incidents has decreased.

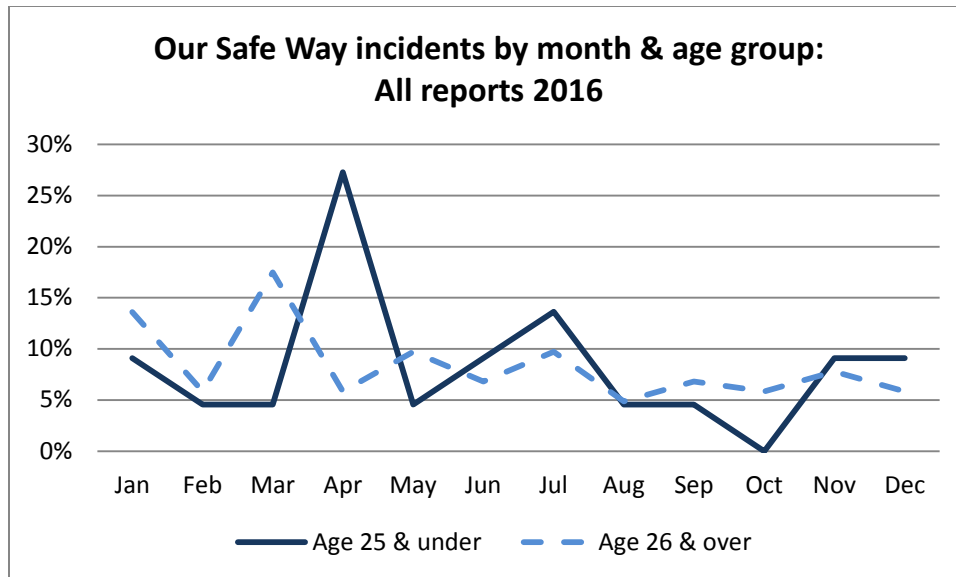
Specific offenses

- Theft remains by far the single greatest source of offenses at this location, but the number reported for youth has decreased, while those reported among adults has increased.
- Likewise, there were fewer youth involved assaults, but more adult involved assaults in 2016 compared to 2015. The number of adult involved robberies also increased.

Time of day, day of week, month of year



- 2016 adult incidents gradually build throughout the day, but youth incidents were less consistent. The highest spikes of activity occurred at 10am, and between 7 and 10pm.
- Overall, incidents were distributed fairly evenly throughout the week, although the fewest incidents occurred on Mondays in 2016. Among youth, the greatest number of incidents occurred on Fridays.



- Most incidents in 2016 occurred in the first seven months of the year, particularly youth incidents. About 75% of youth incidents were reported during this time period.
- More than a quarter of youth incidents were reported in April.